

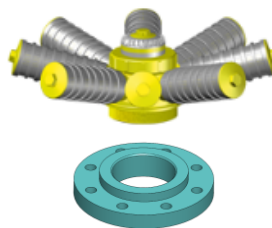
Filtration



Filtertanks epoxy-coated with stardistributor

Execution :

- **Epoxy-coated** steel pressure filters :
 - Sandfilters, multi-media-filters, activated carbon filters, ion-exchange
- Carbon steel according EN 10025 or EN 10028
- Standard execution or made-to-measure max. ø3400 mm.
- Standard design pressure 6 bar@max.60°C
- Flange-connections: EN1092-1
- Pressure calculation code : AD-2000
- Conform PED 2014-68-EU-art.4§3, not for pneumatic applications
- Standard control : hydrostatic tested + manufacturers certification
- Inside-linings: Phenol-epoxy and food-grade epoxy and rubber-linings (ebonite)



Internals :

- Filterstars 0.2 or 0.5 mm
- 8 arms or 16 arms -DN100
- mat. PP – max. 60°C

Type	ø Dia	Cilindr. Height	Volumes Liter	+ -Total Height	+ - weight Kg	Aeration	Inlet + outlet	Manhole lateral	Filling port
F-90-EP-S	900	2000/2500	1450/1750	3100/3600	+ -340/415	5/4"	DN 65	DN 500	DN 200
F-100-EP-S	1000	2000/2500	1850/2200	3200/3700	+ - 380/470	5/4"	DN 65	DN 500	DN 200
F-110-EP-S	1100	2000/2500	2240/2700	3250/3750	+ -420/520	5/4"	DN 80	DN 500	DN 200
F-125-EP-S	1250	2000/2500	3000/3650	3400/4100	+ -650/755	5/4"	DN 80	DN 500	DN 200
F-140-EP-S	1400	2000/2500	3400/4600	3400/3900	+ -750/870	DN50	DN 100	DN 500	DN 200
F-150-EP-S	1500	2000/2500	4400/5250	3400/3900	+ - 935/1060	DN50	DN 100	DN 500	DN 200
F-160-EP-S	1600	2000/2500	5000/6000	3450/3950	+ -1000/1135	DN50	DN 100	DN 500	DN 200
F-180-EP-S	1800	2000/2500	6400/7700	3500/4000	+ -1350/1550	DN50	DN 100	DN 500	DN 200
F-200-EP-S	2000	2000/2500	8100/9700	3500/4000	+ -1550/1800	DN50	DN 125	DN 500	DN 200